

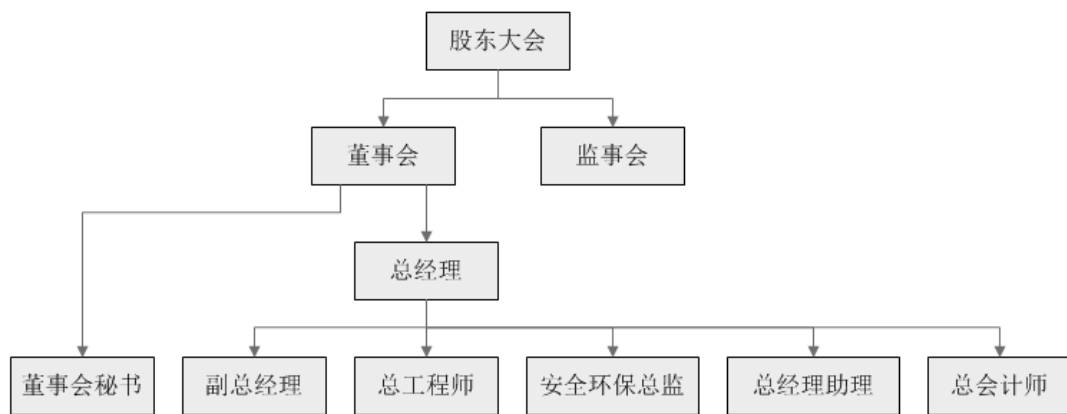
2011

A

18

2011 12 31

3,875,752,457



4

2011

2011 " "

2011 7

" " 2011 12

" "

~

2011

2011 6 30 3,875,752,457

10 2.00 ()

775,150,491.40 19.59

4.58

2011	11,385				
		8,999			1,898
		1,141			2,483
()					

2009—2011 698

2009—2011 144

2011

18

()

12%

"

"

1 2011

838 37028

12 81

6 "

800 9 40 1358

1252

96 798 249 109

2

60% 30%

40%

3

" "

10

30

30

6702

2011

2014

4

"		2011		
3		32	13	6
	"	"		
		2011	137	
79				
	2011		0.82	
		2011		0.084
	11.19		8.45	
8.83		206.17		
		"		"
			614	5
	3.69m ³	0.18m ³	19.01	KWh
	58.41%	9.41		
SO ₂ 1,406		COD 10		100%
	97			
99.17%				

15

7389

3694

"

"

"

"

ISO14001

"

¶

¶

1722

